

# Primary Geography Quality Mark



Dear Subject Leader

## Quality Mark Primary Geography: a subject to be proud of

Do you believe that geography is an essential component of learning to be a 21st century citizen? Are you passionate about improving the quality of geography in your school? If so, the Primary Geography Quality Mark (PGQM) can help. As we enter the fourth year of the award, well over a hundred primary schools can affirm how 'going for the Quality Mark' has helped them to develop quality geography in their school.

Three subject leaders describe how the award has helped the geography in their schools:

'Geography is now seen as a subject to be proud of. Going for the award has raised the profile of geography around the whole school.' *All Saints CE Primary School, Alrewas, Staffs.*

'Great strides have been made in our teaching of geography in the lead up to this submission. Most importantly, it has increased staff confidence when planning and teaching geography, which in turn has increased the children's enjoyment of the subject.'  
*St Wulstan's Catholic Primary School, Stourport upon Severn*

'The process of applying for the PGQM has given me confidence, knowing that we are on the right track with many of the things we do in geography in our school, and it has given me ideas about where to take the subject next ... I've focused on some of the assessment and monitoring issues you know need doing but you often don't get around to ... I have been able to support staff by sharing ideas with them and giving them confidence to try out more creative approaches.' *Leys Farm Junior School, North Lincolnshire*

For a complete list of the schools who achieved the PGQM in Round 3 of the 2008 awards, visit [www.geography.org.uk/eyprimary/primaryqualitymark/roundthree2008](http://www.geography.org.uk/eyprimary/primaryqualitymark/roundthree2008). Round 4 schools will be notified of their award by the end of October 2008.

These are some of the reasons for applying for the PGQM:

- **to celebrate the characteristics of geography in your school**, i.e. what the learning environment looks like and what a rich, exciting experience your geography is giving children
- **to communicate how effectively geography is managed and led**, i.e. how you as subject leader are managing the subject and setting a clear direction for its development in your school, influencing your colleagues and the school's culture
- **to demonstrate how teaching impacts on learning**, i.e. how it supports children's engagement with distinctly geographical experiences and the value of geography as a resource in creative and cross-curricular contexts
- **... and to explain how effectively children learn geography**, i.e. how your geography curriculum is meeting the different needs of learners, and whether their learning demonstrates good, and developing, geographical thinking at a level appropriate to their age and ability.

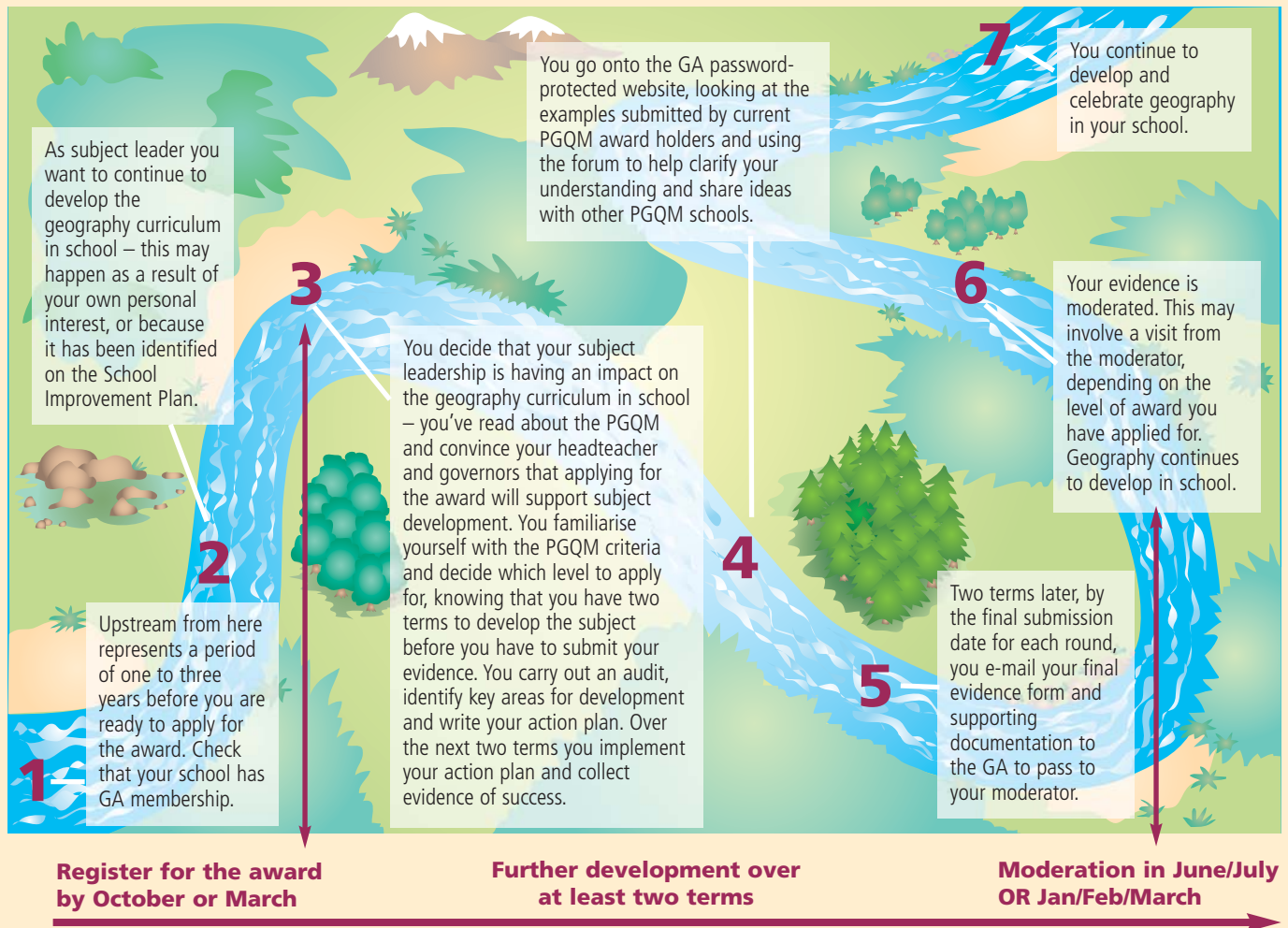
The documentation that supports your application makes it possible to share these achievements with your whole school, governors and parents, as well as with the wider community. Online support is provided via a password-protected website (<http://pgqm.geography.org.uk>) which is available to all interested GA members. Contact Julie Beattie ([jbeattie@geography.org.uk](mailto:jbeattie@geography.org.uk)) who will provide you with a username and password for this site.

The PGQM framework, available at [www.geography.org.uk/eyprimary/primaryqualitymark/self-assessmentframework](http://www.geography.org.uk/eyprimary/primaryqualitymark/self-assessmentframework), is considered so useful by some subject leaders that they have adapted it for use with other subjects. A useful selling point to your senior leadership team might go something like 'If geography pioneers the PGQM framework then perhaps we, as a school, can adapt it for other areas of the curriculum?'

Join in, and start enjoying quality primary geography!

# Your journey towards the Primary Geography Quality Mark

Below we give a simplified illustration of how your journey towards the achievement of the PGQM might look: a fuller and more detailed timeline can be found at [www.geography.org.uk/pgqm](http://www.geography.org.uk/pgqm).



## PGQM levels

### Bronze

Your school will have a small, but core, group of people committed to teaching geography well. This group has an enthusiastic subject leader who is keen to raise the profile of primary geography and to share this enthusiasm with pupils, colleagues and governors. At the heart of this development will be the feeling that a geographical way of thinking about the world is both fun and essential learning for living in the world today.



### Silver

There is a whole school commitment to teaching geography well and to the ongoing development of subject understanding. Playing a leading role is a subject leader who has actively led geography for at least the last two years and had a significant impact on the development of the geography curriculum. The majority of staff and children are enthusiastic about geographical learning, and there is a strong sense that geography has become embedded in the curriculum across the school.



### Gold

Geography is well embedded across the school and has been the focus for active development for at least the three years prior to the PGQM submission. The school's expertise is making a contribution to the development of geography in other primary schools. The school leadership team and governors support an application for the Gold award to celebrate the schools status as a Centre of excellence'.



In conjunction with the above statements, you need to read the PGQM framework ([www.geography.org.uk/eprimary/primaryqualitymark/self-assessmentframework](http://www.geography.org.uk/eprimary/primaryqualitymark/self-assessmentframework)) which sets out in detail the quality of the geography experience at each level.

Wendy North, Curriculum Development Leader (Primary), and Paula Richardson, PGQM Moderator