

Managing Flood Risk: Carlisle Case Study

Main hydrological sub-catchments

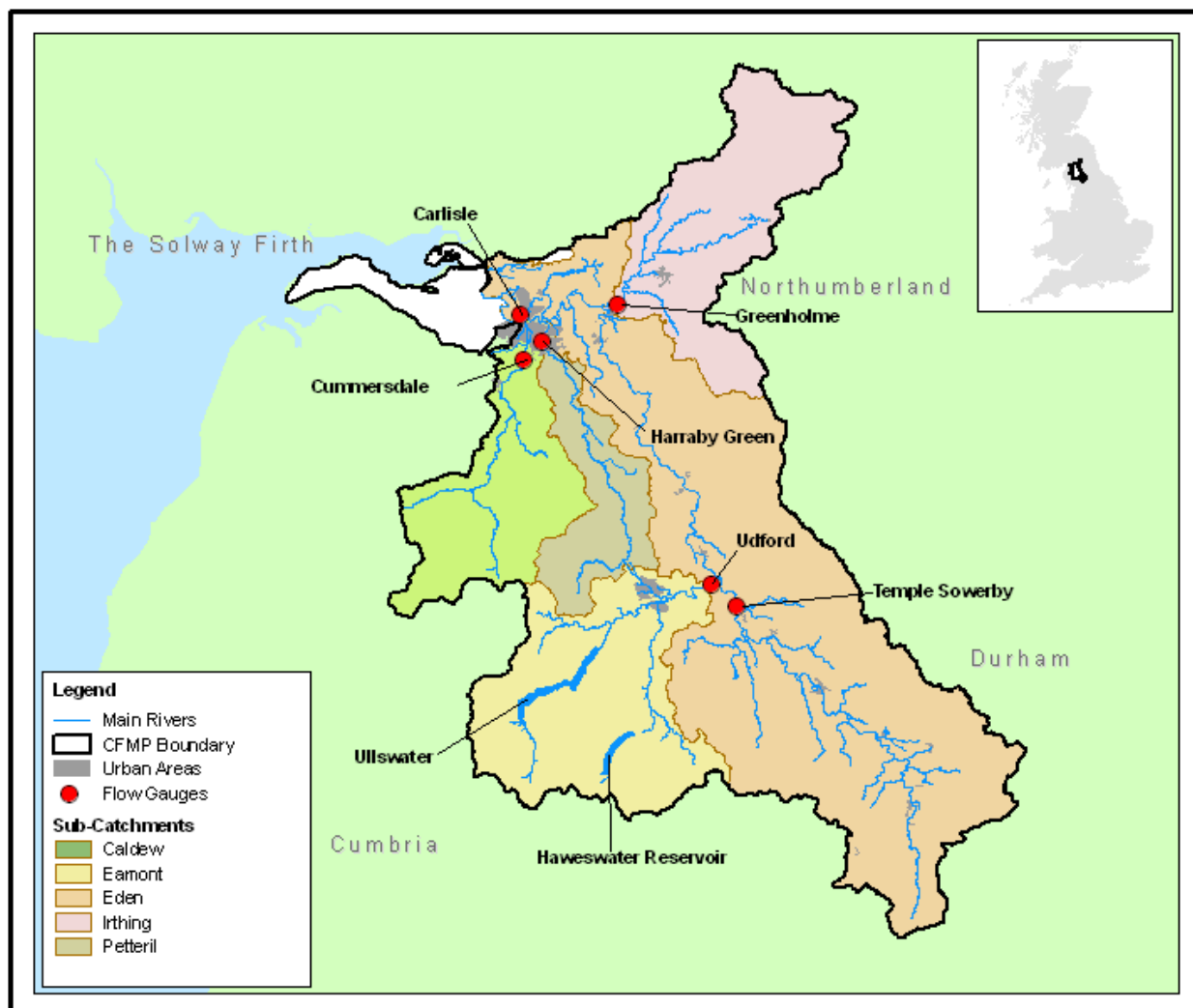


Table 1: Peak flows for contributing catchment

Sub catchment	Area (km ²)	Location of Flow	Time to Peak Flow (hrs)	1% a.p.e. flow (m ³ /s)	Highest Recorded Flow (m ³ /s) (until 2005)	Max. Flows in 1995 (m ³ /s)	Max. Flows Jan 2005 event (m ³ /s)
Eden	1,158	Eden at Temple Sowerby	32.75	587	346 (1985)	322	391
Eamont	410	Eamont at Udford	26.00	335	316 (1985)	231	295
Irthing	333	Irthing at Greenholme	32.75	260	265 (1999)	247	278
Petteril	164	Petteril at Harraby Green	34.75	76	59 (1987)	52	83
Caldew	258	Caldew at Cummersdale	30.00	308	153 (2002)	-	193
Eden	2,400	Eden in Carlisle (Sheepmount)	41.25	1,275	1,075 (1987)	951	1,479

Note: Times of peak flows and 1% a.p.e.(annual probability event) peak flows taken from hydraulic river model