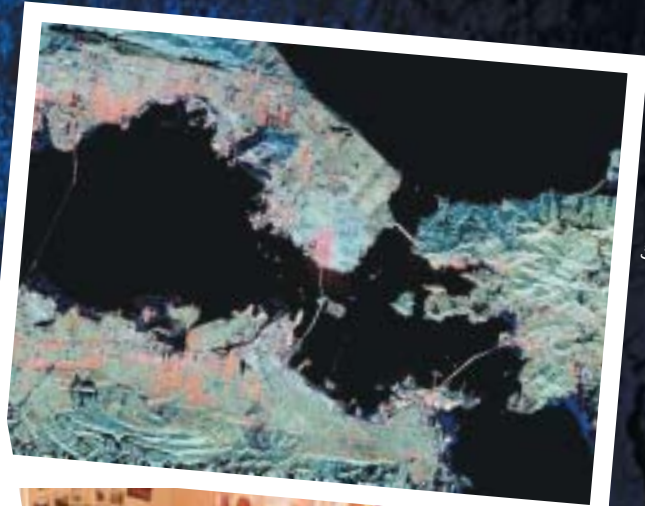


Geography:

a position statement from
the Geographical Association



© Cumberland News, Cumbria



© Earth Images Picture Library



© Elaine Jackson



© Trygve Sornvaag/Panos Pictures

This is geography....



© GeoScience Features Picture Library

Geography



secures *locational knowledge and understanding of spatial relations* – how places are interconnected

develops a *knowledge and understanding of current events* – from local to global

explains *geo patterns and* physical and

makes *connections* between natural, economic, social, political and technological systems

develops the *skill of visual literacy* – interpreting maps, graphs, diagrams, aerial photographs and satellite images

provides op through fie the *first investigation* environm human b

stimulates an interest in, and a wonder of, the world around us – it gives young people a *desire to explore* and enables them to travel confidently

gives real purpose for *using new technologies*, such as Geographic Information Systems

empowers people to *be global c*

geographical
processes –
human

enables *well-informed judgements* about environments and supports an *understanding of sustainable development*

addresses the *complexity of human and physical environments*

opportunities,
worldwork, for
st hand
of places,
ments and
behaviour

provides a meaningful context for *developing transferable skills* – literacy, numeracy, ICT, problem solving, team work, thinking skills, enquiry

prepares for the world of work – geographers, with their *skills of analysis and synthesis*, are highly employable

s all young
become active citizens

helps students to understand that there may be more than one way of tackling *specific real-life problems*



Geographical
Association

The Geographical Association believes that...

- geography makes a major contribution to our physical, intellectual, social and emotional development
- geographical knowledge, concepts and skills are essential components of a broad and balanced curriculum
- a geographical education is an entitlement for all and should remain a statutory component of the curriculum at key stages 1, 2 and 3
- the programme of study, and examination specifications, should be sufficiently flexible to allow for a range of approaches to the teaching and learning of the subject
- all students who would like to study geography beyond the statutory curriculum should be given the opportunity to do so
- appropriate curriculum time must be allocated to the teaching and learning of geography for all young people
- all those who teach geography should have the subject specific knowledge, understanding and skills to do so
- all who teach geography are entitled to regular, high quality subject-specific continuing professional development
- geography should be challenging, topical, motivating and fun!

What can you do to promote geography?

- if you are a teacher/lecturer ... use this statement to make the case for geography
- if you are a parent ... support your child's geographical learning
- if you are a school governor ... ensure geography's place in the curriculum
- if you are a decision-maker ... help to secure geography's distinctive contribution to education for life

Further GA support

- Additional copies of this Position Statement can be purchased in packs of 25 (price £5.95, plus p&p.)
- A leaflet to encourage students to continue to study geography (This is Geography... in school and beyond) is available in packs of 50 (price £9.95, plus p&p.)
- visit www.geographyshop.org.uk to order copies or contact us at the address below.



Geographical Association

The Geographical Association,
160 Solly Street, Sheffield S1 4BF
tel 0114 296 0088 fax 0114 296 7176
e-mail ga@geography.org.uk
website www.geography.org.uk

Registered Charity No. 313129

